

## Annex C (normative)

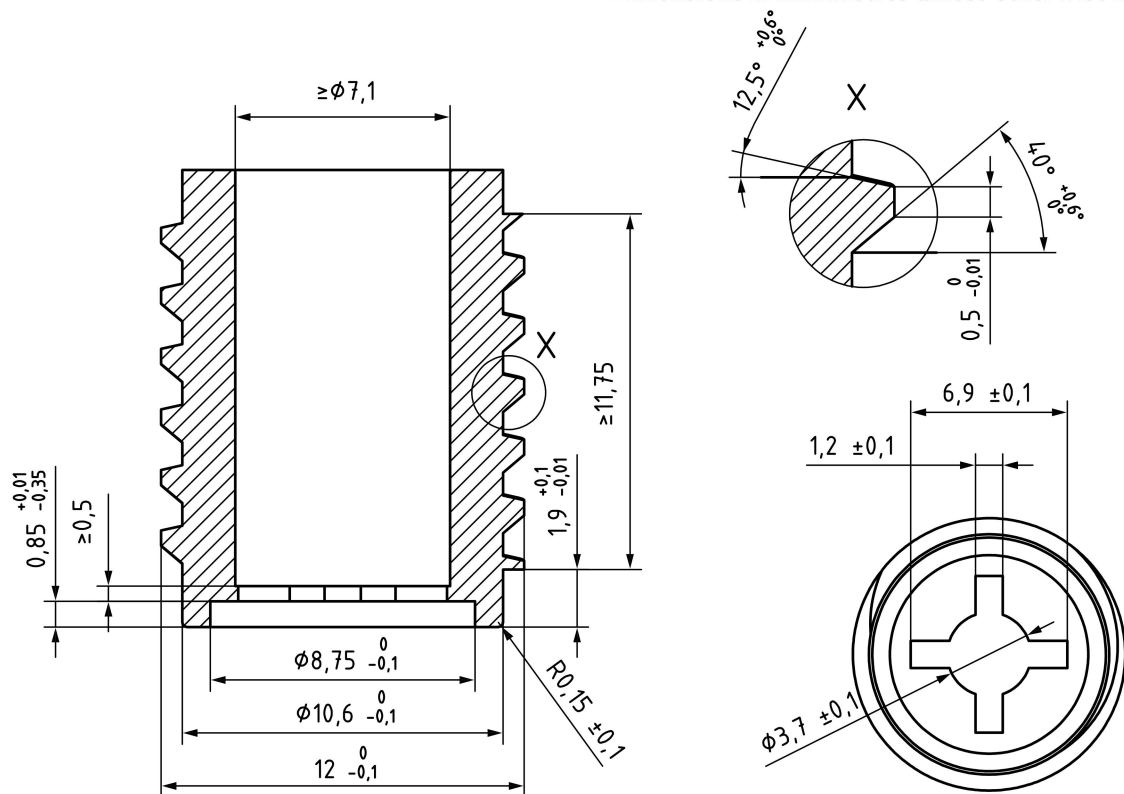
### Reference CONNECTORS

#### C.1 General requirements for reference CONNECTORS

Reference CONNECTORS shall be manufactured from corrosion-resistant RIGID MATERIALS with a surface roughness value  $R_a$  not exceeding  $0,8 \mu\text{m}$  on critical surfaces.

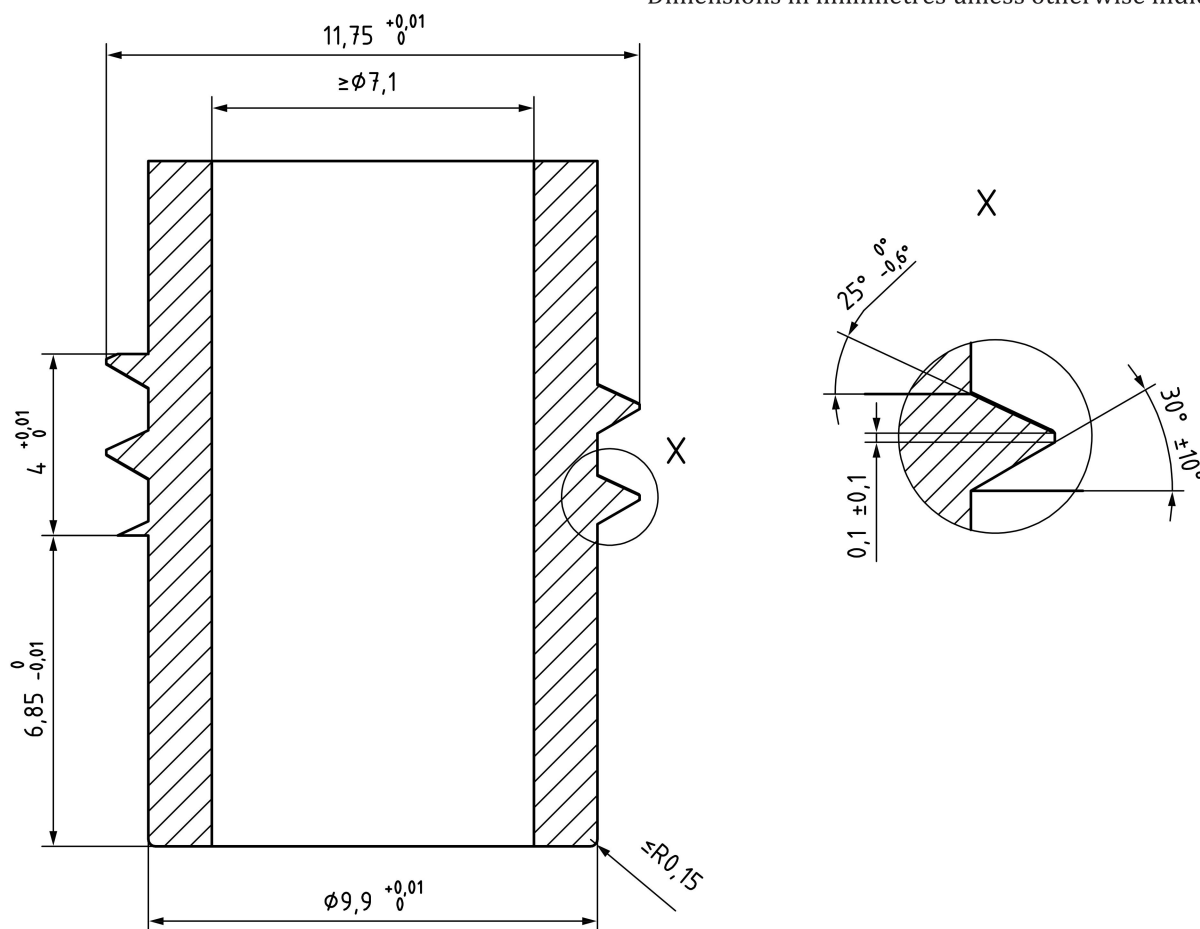
#### C.2 Reference CONNECTORS

Dimensions in millimetres unless otherwise indicated



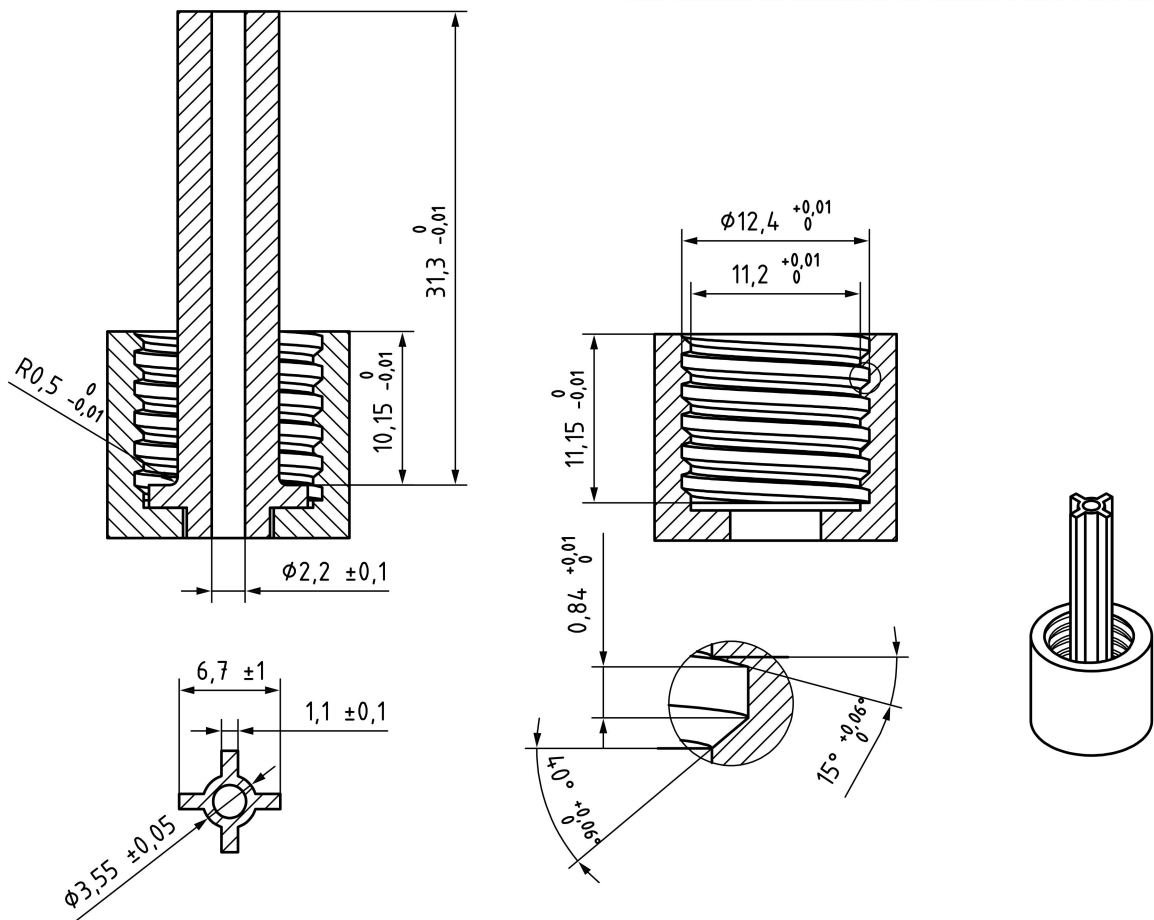
**Figure C.1 — Cross port reference RESERVOIR CONNECTOR for testing cross connector (E1R) for positive pressure liquid leakage, subatmospheric pressure air leakage, stress cracking, disconnection by unscrewing, and separation from unscrewing**

Dimensions in millimetres unless otherwise indicated



**Figure C.2 — Cross port reservoir REFERENCE CONNECTOR for testing cross connector (E1R) for separation from axial load and resistance to overriding**

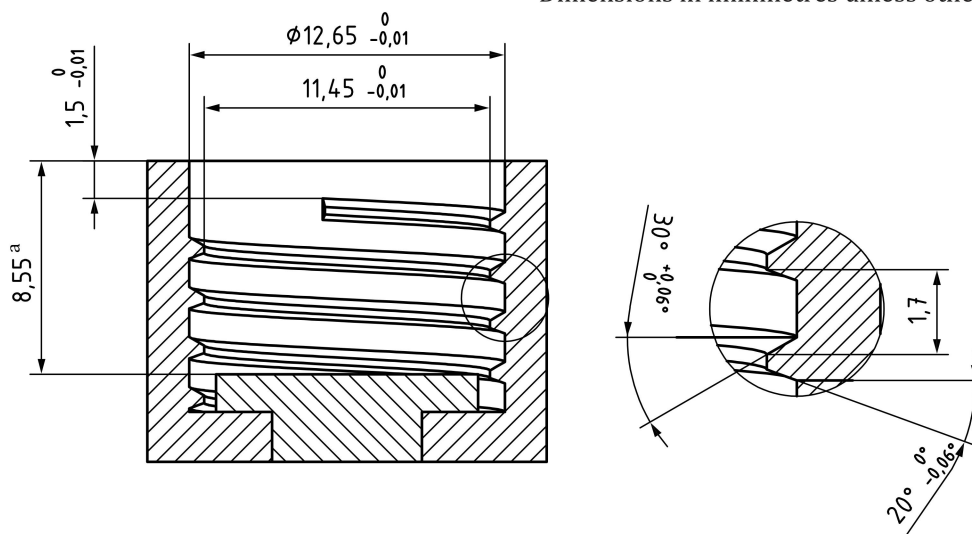
Dimensions in millimetres unless otherwise indicated



NOTE 1 This dimension does not include the thickness of the gasket.

**Figure C.3 — Cross connector for testing cross port RESERVOIR CONNECTOR (E1R) for positive pressure liquid leakage, subatmospheric-pressure air leakage, stress cracking, disconnection by unscrewing, and separation from unscrewing**

Dimensions in millimetres unless otherwise indicated



NOTE 1 This dimension does not include the thickness of the gasket.

**Figure C.4 — Cross connector for testing cross port RESERVOIR CONNECTOR (E1R) for separation from axial load and resistance to overriding**



Dimensions in millimetres unless otherwise indicated  
 $0,2 \pm 0,05$

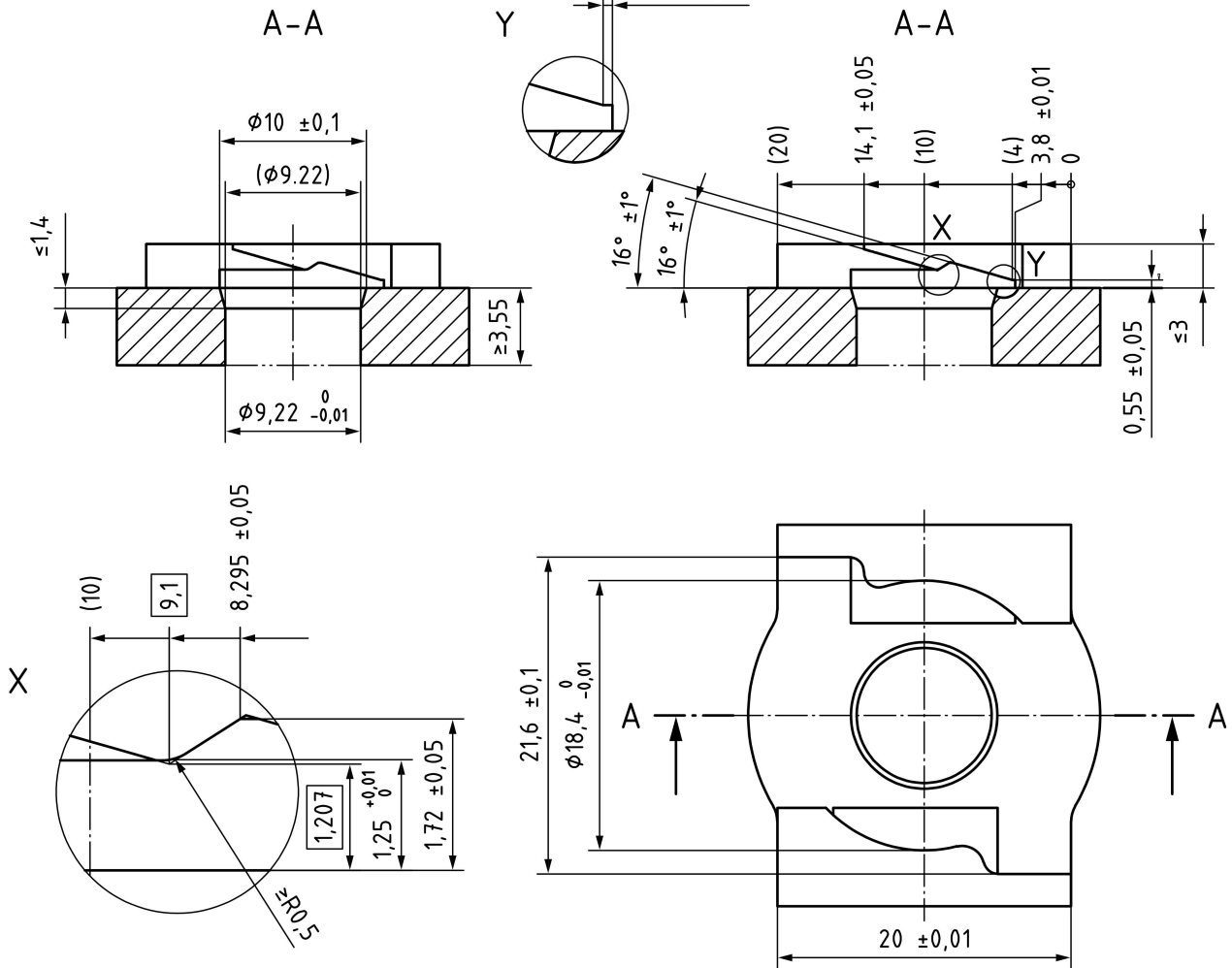


Figure C.6 — Female reference connector for testing male enteral RESERVOIR CONNECTOR (E2R) for positive pressure liquid leakage, subatmospheric-pressure air leakage, stress cracking, resistance to separation from axial load, and resistance to overriding