



## IPX9K-1000 High Pressure High Temperature Jetting Tester



## Kingpo Technology Development Limited

Tel: +86 769 81627526

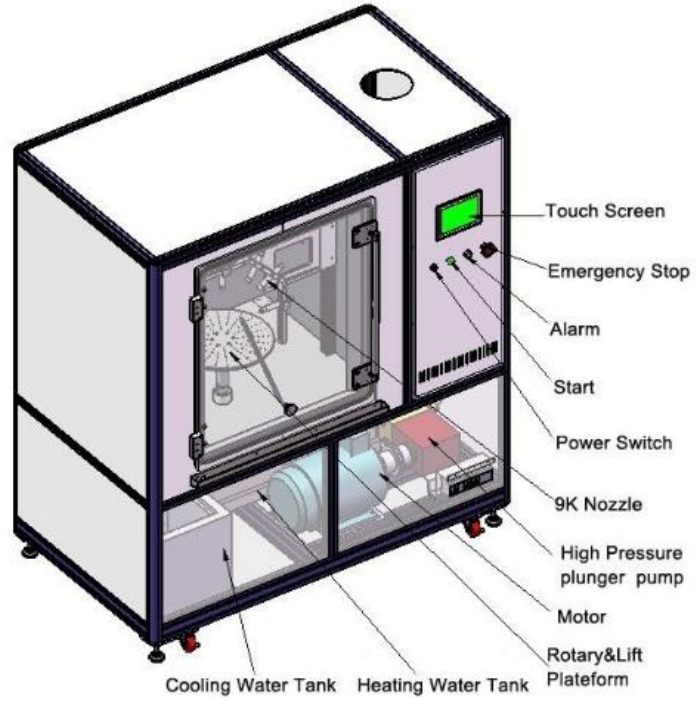
Fax: +86 769 89032367

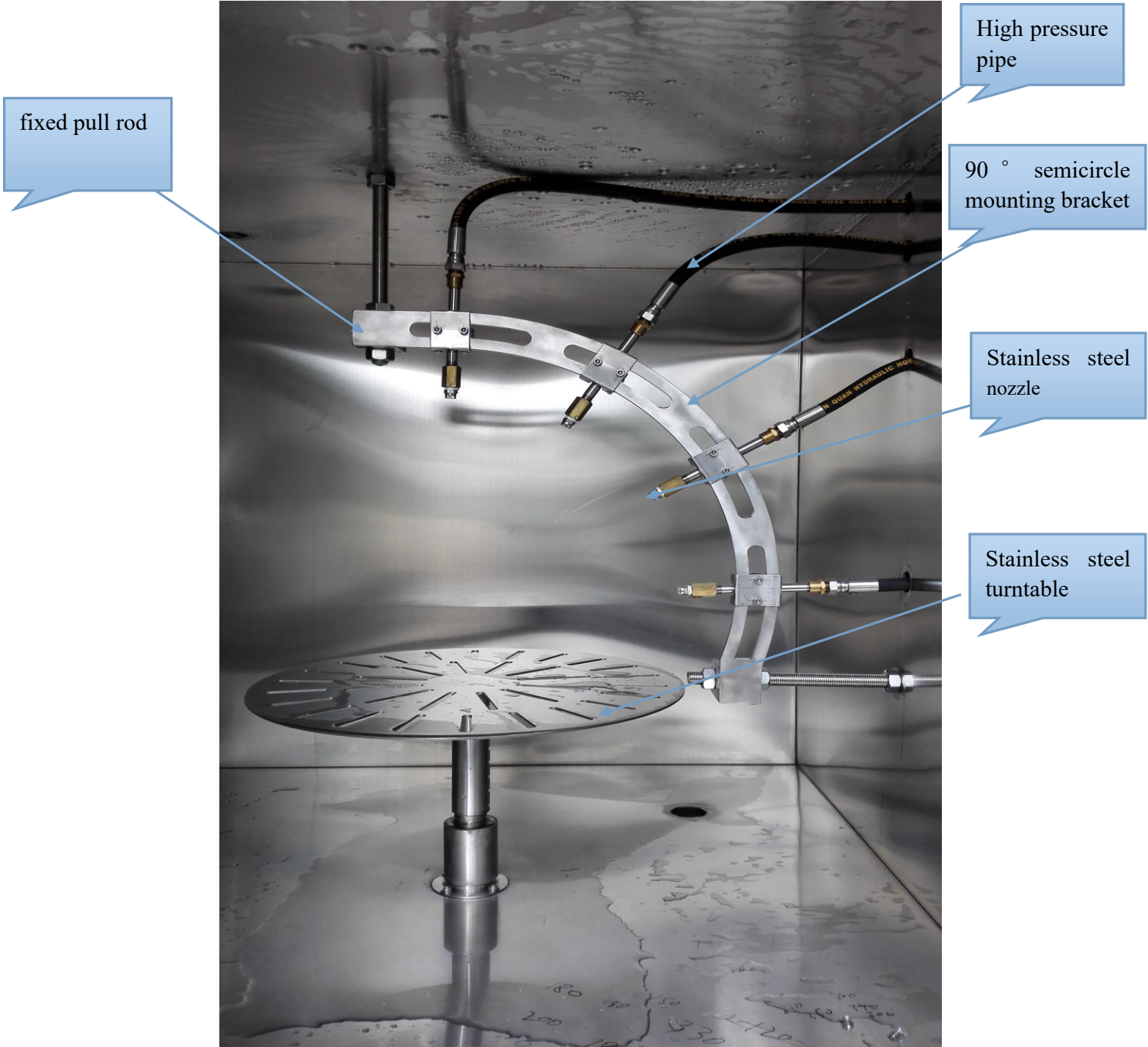
E-mail: [sales@kingpo.hk](mailto:sales@kingpo.hk)

[Http://www.kingpo.hk](http://www.kingpo.hk)

Address: No. 9 University Road, Songshan Lake, Dongguan City -523770, China

## Internal





fixed pull rod

High pressure pipe

90 ° semicircle mounting bracket

Stainless steel nozzle

Stainless steel turntable



## 1. Technical Parameters

Item	Parameters
Working Volume	1000*1000*1000mm
Test Water Temperature	80±5 °C
Spray Pressure	8Mpa~10Mpa (adjustable)
Spray Flow	14L/min~16L/min (change according to pressure)
Nozzle Number	4 (0°,30°,60°,90°)
Nozzle Size	According to standard graphics, meet standards
Spray Distance	100~150mm (adjustable)
Nozzle Spay Time	0-99,9s(can be set)
Spray Sequence	Automatically switch by sequence/Manual
Turntable	φ400mm
Turntable speed	5 r/min ± 1 r/min
Turntable Lift	300mm~400mm (Manually)
Turntable loading(max)	90kg
Maximum size of test sample	400*400*400mm
Test Water	Recycling
Flow Meter	Electronic flowmeter (touch screen control)
Power Supply For Test Sample	Provide interface for test product,≤16A,(can customize)
Power	AC380V 50Hz ,25kw
Control Mode	PLC controller + touch screen control, inverter adjust water pressure
According to standard	IEC 60529, ISO 20653

## 2. Equipment photos



### The nozzles

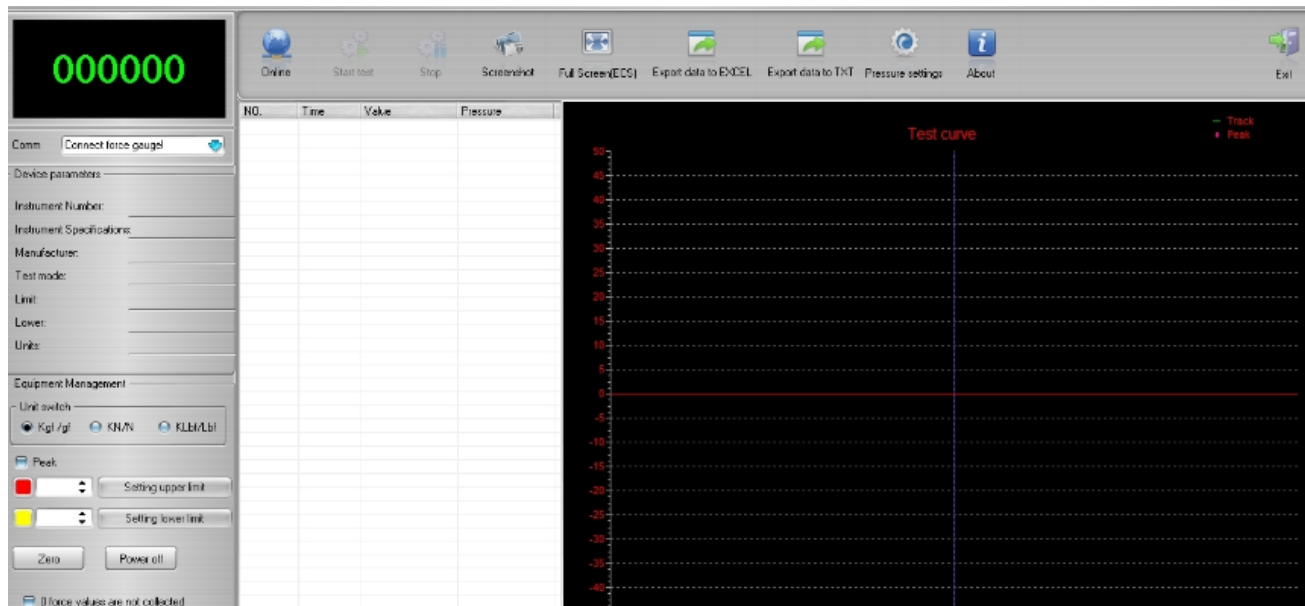




Set-up for measuring the impact force of the water jet for determining



The force sensor can be connected to a computer to display curves





Touch screen control page

Mode A-Constant-Flow 2021-5-6  
16:25:18

<input type="radio"/> Heating	<input checked="" type="radio"/> Full	<input type="radio"/> Shortage	<input type="radio"/> 0°	<input type="radio"/> 30°	<input type="radio"/> 60°	<input type="radio"/> 90°	<input type="radio"/> Con-flow
Temp(sv) <input type="text" value="0.0"/> °C	Pressure <input type="text" value="0.00"/>	Frequency <input type="text" value="0.0"/>					
Temp(pv) <input type="text" value="0.0"/> °C	Flow(sv) l/min <input type="text" value="0.0"/>	Flow(pv) l/min <input type="text" value="0.0"/>					
Add water <input type="text" value="ON"/>	Test Time(sv) s <input type="text" value="0.0"/>	Test Time(pv) s <input type="text" value="0.0"/>					
Heating <input type="text" value="Water cycle"/>	Test Times(sv) <input type="text" value="0"/>	Test Times(Pv) <input type="text" value="0"/>					

RUN STOP POWER Turntable Turntable mode  Turntable speed Zero

待机中..